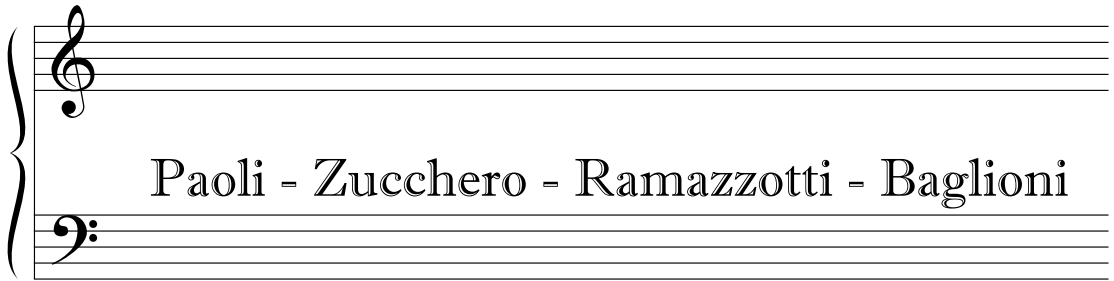


elaborazione PERRINI

AUTORI IN CONCERT



sapore di sale

con le mani

donne

se bastasse una canzone

terra promessa

porta portese

piccolo grande amore

programmare siae: PERRINI / AUTORI IN CONCERT

studio musicale PERRINI

autori in concert

Paoli

Zuccherò

Ramazzotti

Baglioni

programmare SIAE PERRINI / autori in concert

Slow roch

Clarineti

f

Trombe
Fl.sop.

f

Baritoni

f

Armonie
Bassi

f

Batteria

f

mf

mf

mf

mf



System 1 of the musical score. It consists of five staves. The top staff is in treble clef with a key signature of one sharp (F#). The second staff is also in treble clef and contains rests for the first four measures, followed by a melodic line starting in the fifth measure with a dynamic marking of *mf*. The third staff is in bass clef and contains a melodic line. The fourth staff is in bass clef and contains a rhythmic accompaniment with chords. The fifth staff is a grand staff with a piano symbol and contains a rhythmic accompaniment with chords. The system concludes with a double bar line.



System 2 of the musical score. It consists of five staves. The top staff is in treble clef with a key signature of one sharp (F#). The second staff is also in treble clef and contains a melodic line. The third staff is in bass clef and contains a rhythmic accompaniment. The fourth staff is in bass clef and contains a rhythmic accompaniment. The fifth staff is a grand staff with a piano symbol and contains a rhythmic accompaniment with chords. The system concludes with a double bar line.



System 3 of the musical score. It consists of five staves. The top staff is in treble clef with a key signature of one sharp (F#). The second staff is also in treble clef and contains a melodic line. The third staff is in bass clef and contains a rhythmic accompaniment. The fourth staff is in bass clef and contains a rhythmic accompaniment. The fifth staff is a grand staff with a piano symbol and contains a rhythmic accompaniment with chords. The system concludes with a double bar line.

System 1: A five-staff musical score. The top two staves are in treble clef with a key signature of one sharp (F#). The bottom two staves are in bass clef with a key signature of one flat (Bb). The fifth staff is a grand staff with a double bar line and repeat signs. The music consists of several measures with various rhythmic patterns and rests.

System 2: A five-staff musical score. The top two staves are in treble clef with a key signature of one sharp (F#). The bottom two staves are in bass clef with a key signature of two flats (Bb, Eb). A first ending bracket labeled '1' spans the first two measures of the top two staves. The fifth staff is a grand staff with a double bar line and repeat signs.

System 3: A five-staff musical score. The top two staves are in treble clef with a key signature of two flats (Bb, Eb). The bottom two staves are in bass clef with a key signature of two flats (Bb, Eb). The fifth staff is a grand staff with a double bar line and repeat signs.